



Technical details

Product No.	A41K241600xx	A41K242000xx	A41K242400xx
Led Q.ty (LEDs/m)	160	200	240
Led Type	2835	2835	2835
Power (W/M)	9,6	16,80	22
Voltage (V)	24 ±3%	24 ±3%	24 ±3%
Current (mA/M)	400	700	916
CRI (Ra)	≥ 90	≥ 90	≥ 90
Lenght/Reel (M)	5	5	4
Beam	120°	120°	120°
Water-proof rating	IP20	IP20	IP20

Non-directional or directional light source:	Non-directional (NDLS)
Mains or non-mains light source:	Non-mains (NMLS)
Dimmable:	Only with specific LED drivers
Cables type:	PVC 80°C 20AWG lenght 36cm (double ended)
Pcb material:	COPPER
Tape type:	3M 9080
Energy rating:	E (EU 2019/2015) *
Protection against electric shock:	Class III
Version:	Integral
Safety isolating:	See electronic controlgear
Lumen maintenance factor:	96%
Survival factor:	100%
Nominal lifetime LM-80:	L70 B50 >54000 h
Photobiological Safety (Blue light hazard) according to IEC TR 62778:	Risk Exempt (RG0 group)

*Energy class is calculated according to Spectrum test measurements

LED STRIPS – 24V - LED 2835 – CRI90 – IP20 – K SERIE

Lumens per meter

Color Temperature	A41K241600xx	A41K242000xx	A41K242400xx
3000K	1240 lm	2150 lm	3000 lm
4000K	1300 lm	2390 lm	3060 lm

● Due to tolerances of the production process and the electrical components, values for light output and electrical power can vary up to 10%.

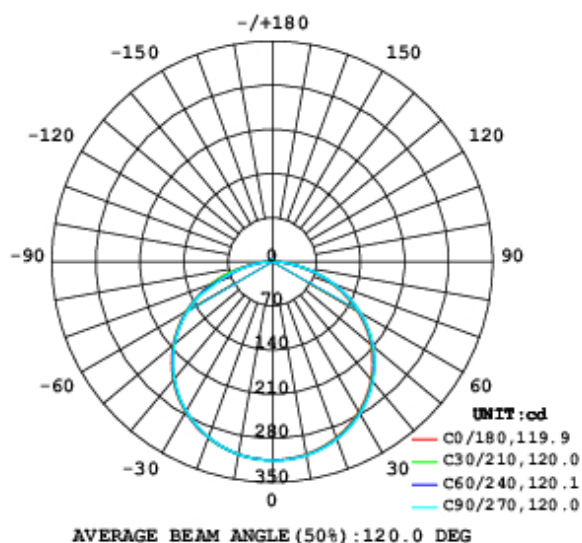
Efficacy

Color Temperature	A41K241600xx	A41K242000xx	A41K242400xx
3000K	104 lmW	128 lmW	136 lmW
4000K	135 lmW	142 lmW	139 lmW

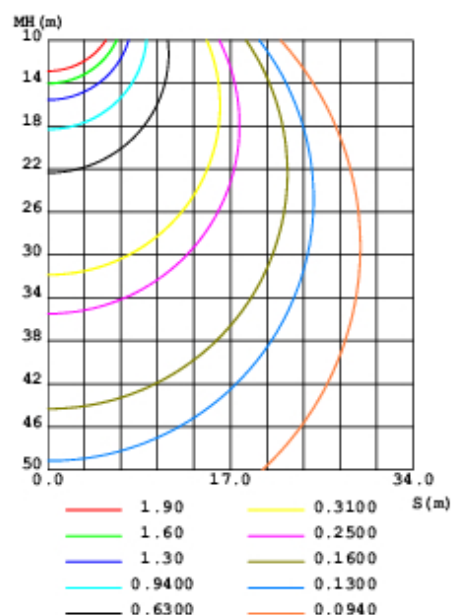
● Note: "xx"=CCT "30"(3000K)/"40"(4000K)

Light distribution

LUMINOUS INTENSITY DISTRIBUTION DIAGRAM



C0 PLANE ISOLUX DIAGRAM (UNIT:lx)



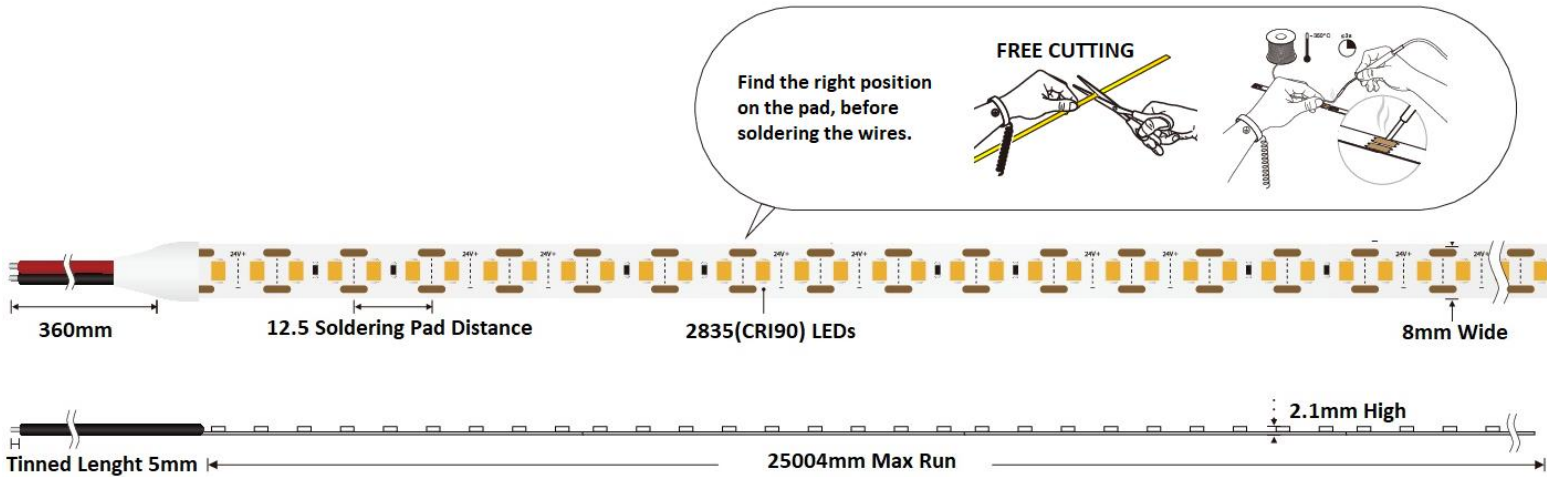
Working conditions

Working Temperature (°C)	-20 ÷ 50
Storage Temperature (°C)	-30 ÷ 80
Voltage Range (Vdc)	23 ÷ 24
Reverse Voltage (Vdc)	24
Reference temperature (Tc)	80° C

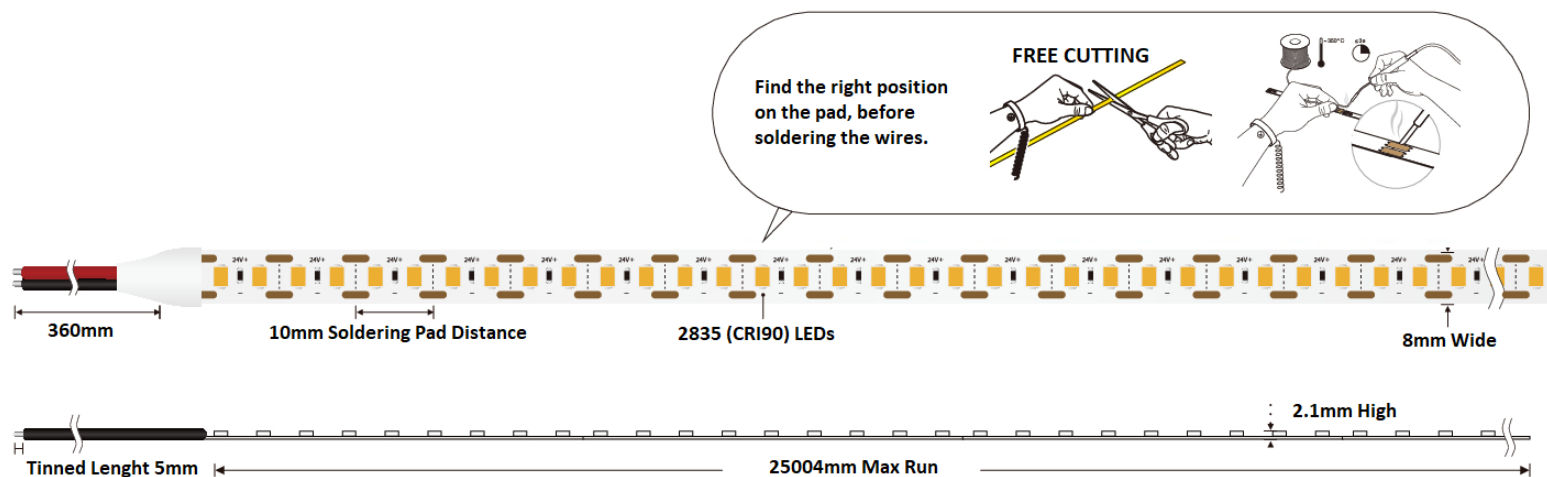
LED STRIPS – 24V - LED 2835 – CRI90 – IP20 – K SERIE

Product dimensions

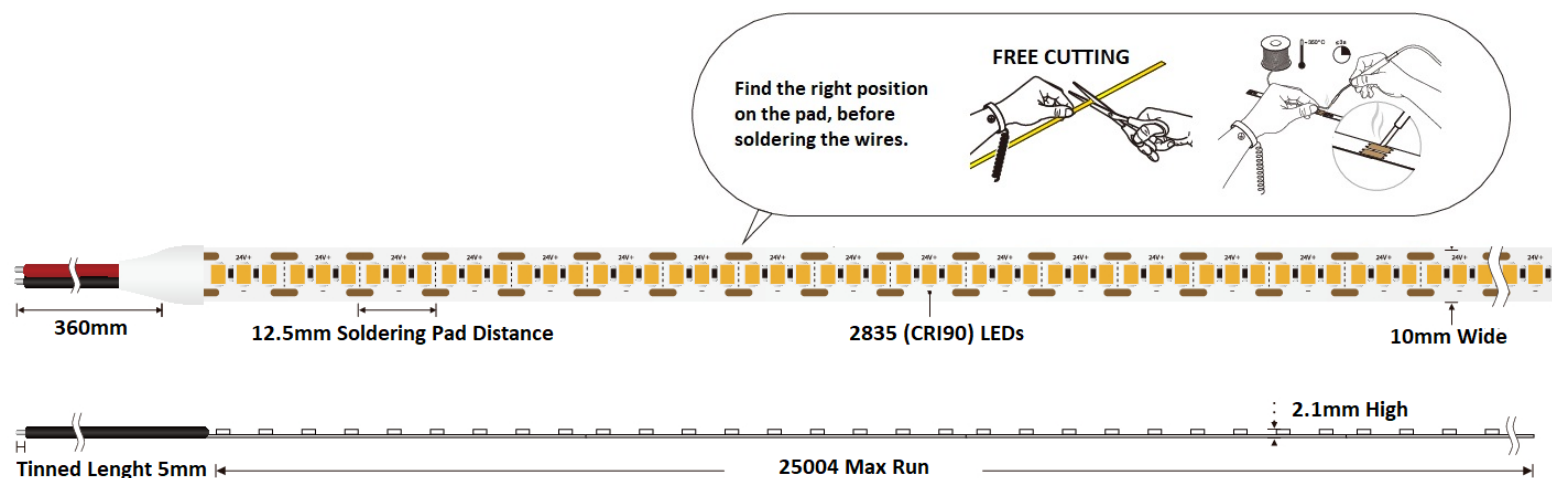
160LED/m



200LED/m



240LED/m



Product weight / 5m reel

A41K241600xx	125 gr.
A41K242000xx	150 gr.
A41K241600xx	175 gr.

Energy labelling (EU 2019/2015) and Ecodesign (EU 2019/2020) regulations

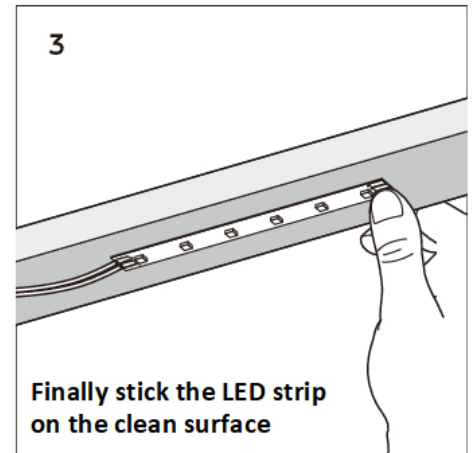
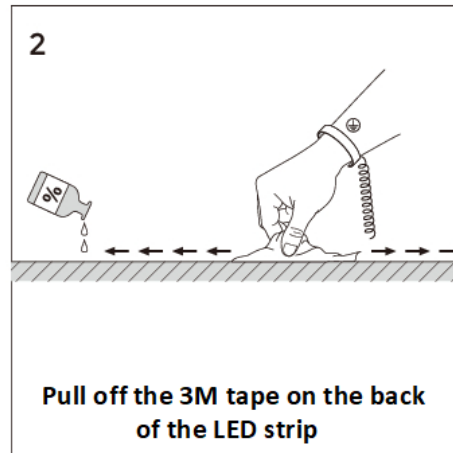
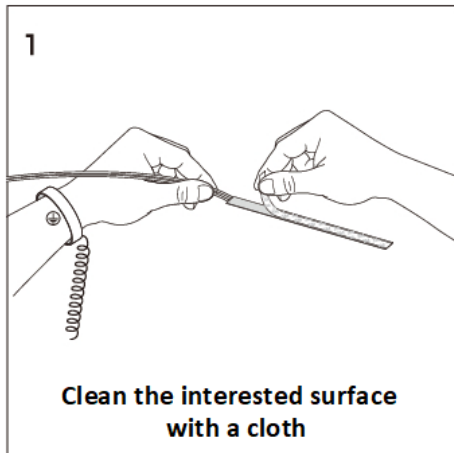
Part Number	N° EPREL	EU 2019/2015 Energy rating	EU 2019/2020 Compliance
A41K24160030 – 3000K	2279182	E	COMPLIANT
A41K24160040 – 4000K	2279209	E	COMPLIANT
A41K24200030 – 3000K	2279216	E	COMPLIANT
A41K24200040 – 4000K	2279230	E	COMPLIANT
A41K24240030 – 3000K	2279310	E	COMPLIANT
A41K24240040 – 4000K	2279318	E	COMPLIANT

The scan of the QR Code on the energy label of the product refers directly to the description of the model in the EPREL (EU Product Database for Energy Labelling) database, where it is possible to download the energy labels and the information sheet of the product.

In alternative, it is possible to access the database using the model registration number (EPREL ID), which you can obtain from the product supplier.

Just insert in the browser the link <https://eprel.ec.europa.eu/screen/product/lightsources/> and add the EPREL ID after the last slash.

Installation



Cutting

